

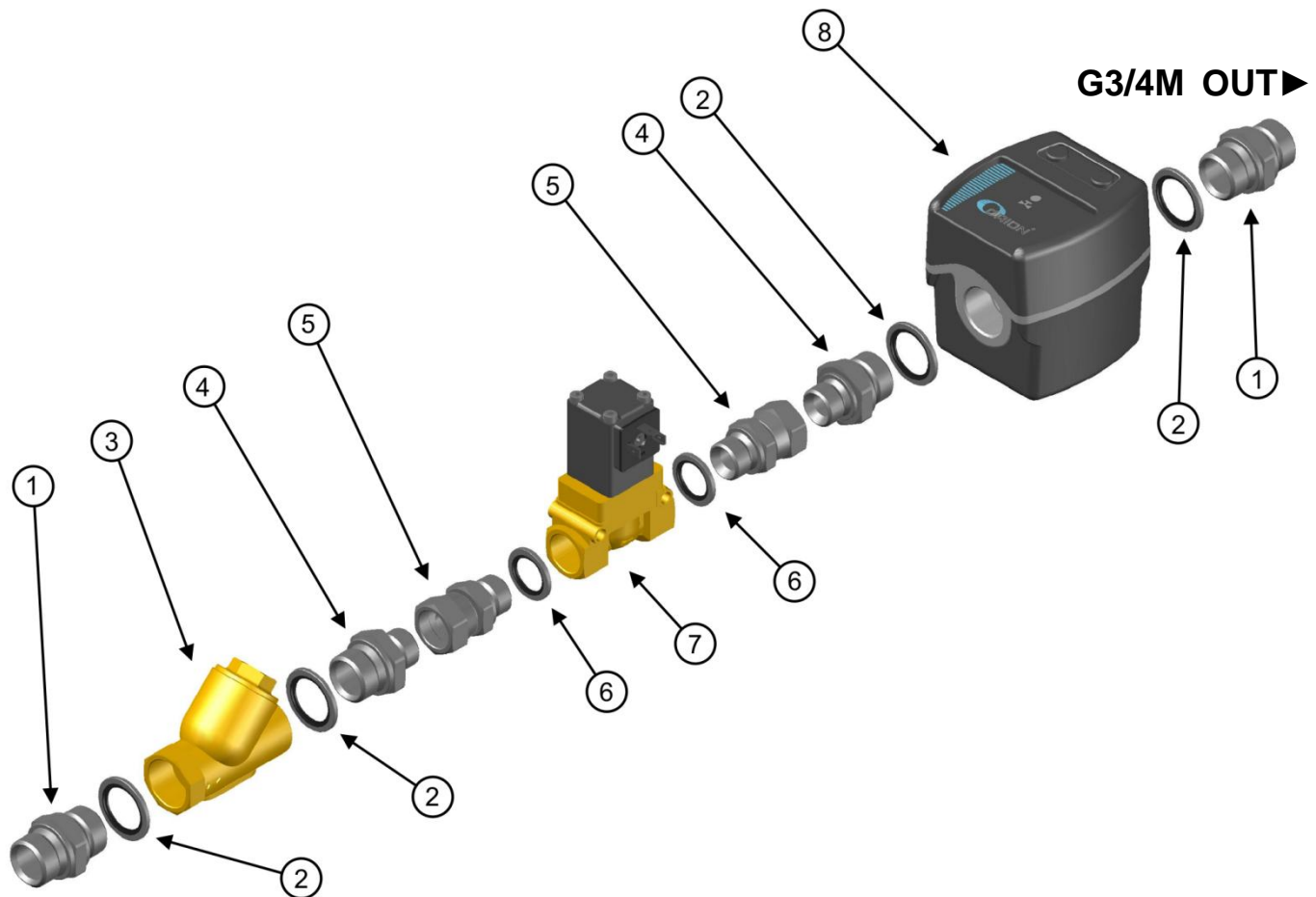


G3/4 Mätverk med 109 pulser/liter och G1/2 magnetventil
 G3/4 In-Line meter with 109 pulses/litre and G1/2 solenoid valve

Weight / Vikt: 2 Kg

 = Flytande Tätningmedel vid alla gänganslutningar
 = Liquid sealant at all thread points



IN ► G3/4M

Note! The arrows indicating flow direction on the meter in/outlets are preferred direction not mandatory!

Obs! Pilarna som indikerar flödesriktning på mätarens in/utlopp är rekommenderade ej tvingande!

Benämning / Description				Antal Quantity	Art.nr. Part. No.
Pos.	1	Nippel / Adapter	G3/4M – G3/4M	2	25102008
Pos.	2	Gummi-stålbricka / Rubber steel washer	G3/4	4	10103544
Pos.	3	Sil / Y-strainer	G3/4F – G3/4F	1	28059
Pos.	4	Nippel / Adapter	G3/4M – G1/2M	2	25102353
Pos.	5	Nippel med svivlande mutter / Adapter with swivelling nut	G1/2F – G1/2M	2	25102359
Pos.	6	Gummi-stålbricka / Rubber steel washer	G1/2	2	10103526
Pos.	7	Magnetventil 24V= / Solenoid valve 24V DC	G1/2F –G1/2F	1	28127
Pos.	8	Mätverk / Meter, 109 pulser per liter / pulses per litre	G3/4F – G3/4F	1	24766